



City of Los Angeles Department of Public Works

Venice Dual Force Main Sewer Project

Construction of a new 54-inch diameter force main sewer line to operate as a parallel system in conjunction with the existing sewer line. The sewer project will increase capacity, create pipeline redundancy and allow for maintenance.

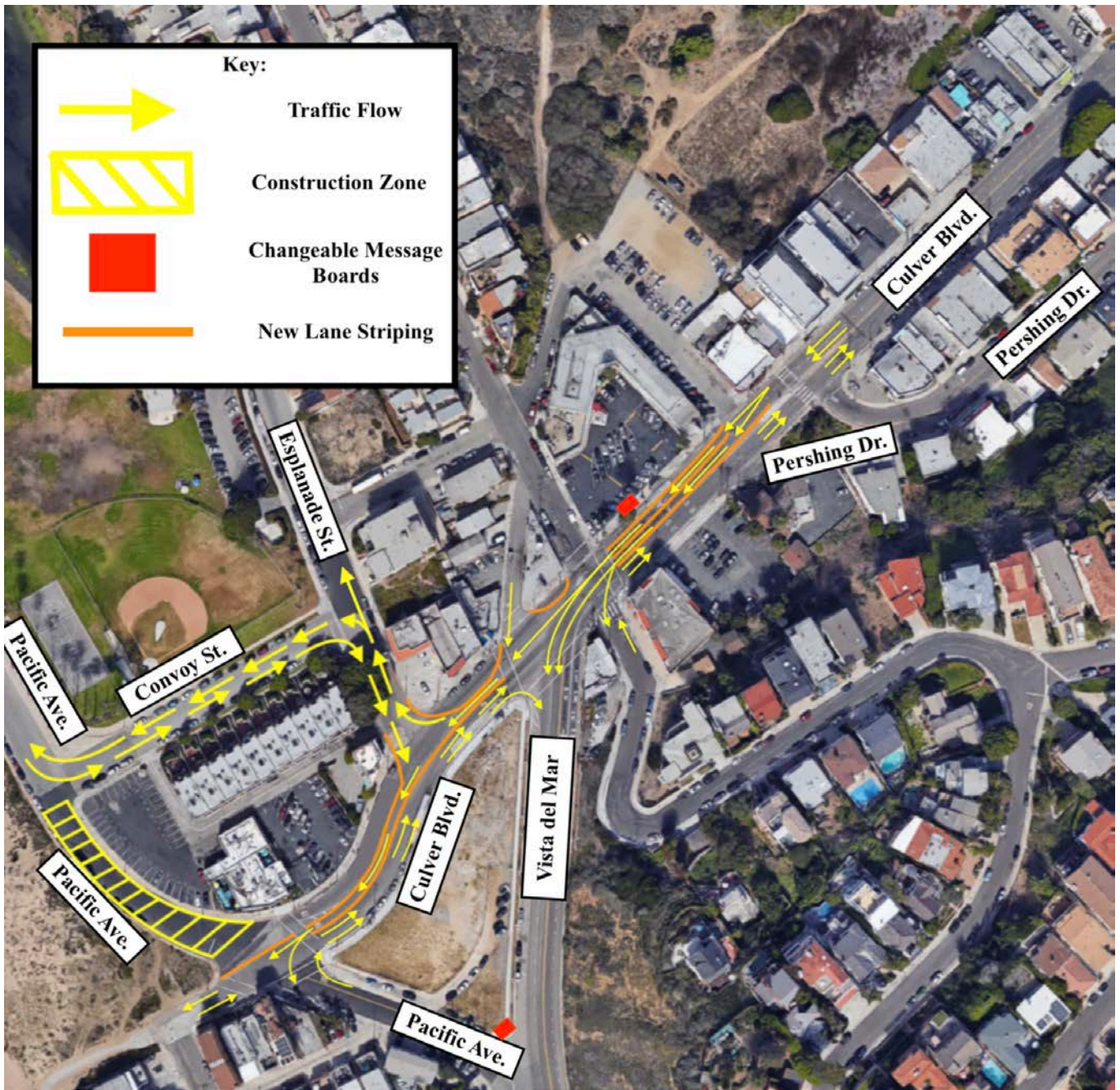
Construction Activities scheduled for January 16th, 2018 through February 2018

Overall Project Dates: Spring 2017 through Summer 2020

<p>Work scheduled for January 16th, 2018 through February 2018</p>	<ul style="list-style-type: none"> • Message boards with upcoming traffic information will be placed on January 2nd, 2018. • Traffic control implementation and site set-up activities scheduled for January 16th, 2018 through February 2018. • Site setup activities will include: LADWP utility relocation, installation of sound walls, k-rail installation, site fencing, mobilization and equipment delivery, heavy equipment activities. • Traffic control implementation will include: Lane reduction on Culver Blvd westbound from Pershing Drive to Pacific Avenue, temporary road closure on Pacific Avenue between Convoy Street and Culver Blvd, no left turns to northbound Pacific Avenue from Culver Blvd. • Construction activities will be ongoing at this location through Fall 2018. Construction updates will be provided regularly as work progresses.
<p>Where is the construction area?</p>	<p>Activities will occur at the following locations:</p> <ul style="list-style-type: none"> • Construction area located at Pacific Avenue between Convoy Street and Culver Boulevard • Traffic Control Implementation on Culver Boulevard westbound lanes between Pershing Drive and Pacific Avenue
<p>What time are crews scheduled to work?</p>	<p>Expected work hours are: Mon – Fri, 7am – 7pm, Sat, 8am – 5pm</p>
<p>What can I expect?</p>	<ul style="list-style-type: none"> • Noise associated with heavy equipment, concrete and asphalt demolition, excavation, construction traffic with large equipment movement
<p>Is local access impacted?</p>	<p>Through traffic will be maintained for local traffic access at all times. Driveway access will be maintained for businesses and residents for deliveries and trash pickup. There will be no driveway impacts to businesses on Culver Boulevard.</p>
<p>Safety Measures (to protect the public and construction crew)</p>	<p>Appropriate traffic handling measures will be implemented to safely divert traffic through the construction zone. Safety barriers will be used in all construction areas.</p>
<p>Who can I contact for information?</p>	<p>City of Los Angeles Department of Public Works, Public Affairs Office Telephone: (213) 978-0333 For inquiries after 5pm and on weekends please call the LA Sanitation Customer Care Center at: (800) 773-2489 Email: publicworks.publicaffairs@lacity.org Facebook: https://www.facebook.com/lacitysan/ Website: www.lacitysan.org -> Special Projects -> Venice Dual Force Main</p>



As a covered entity under Title II of the Americans with Disabilities Act, the City of Los Angeles does not discriminate on the basis of disability and upon request, will provide reasonable accommodation to ensure equal access to its programs, services and activities.



Example of Project Work Site:
Sound Walls with K-Rail